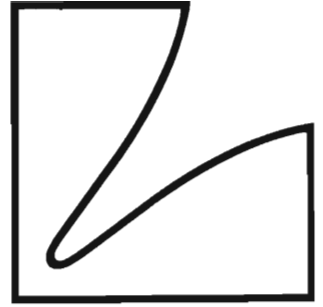
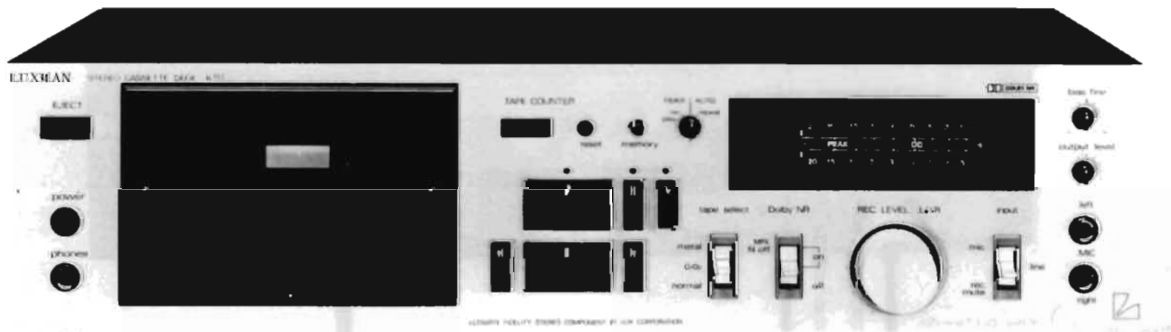


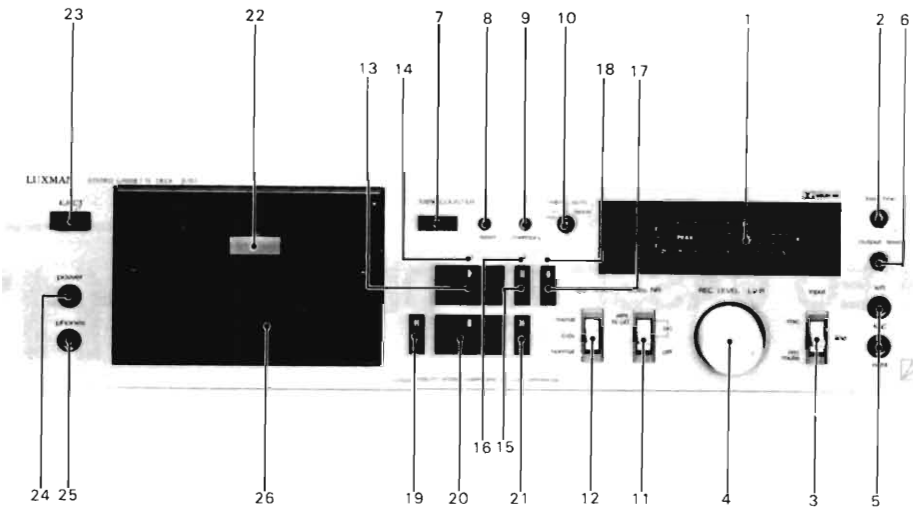
SERVICE MANUAL



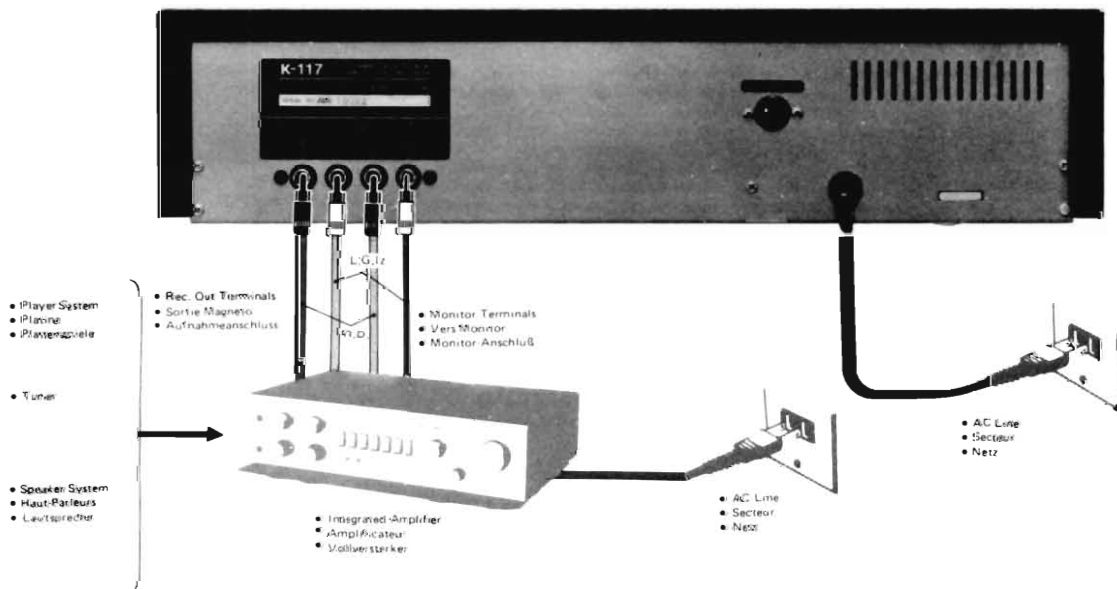
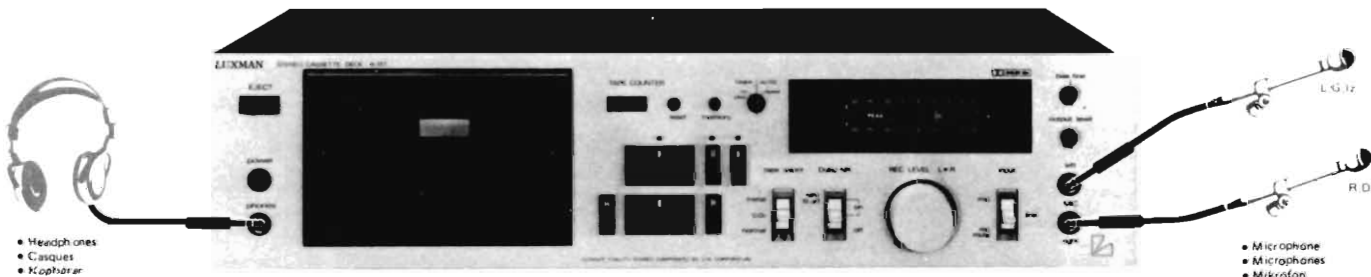
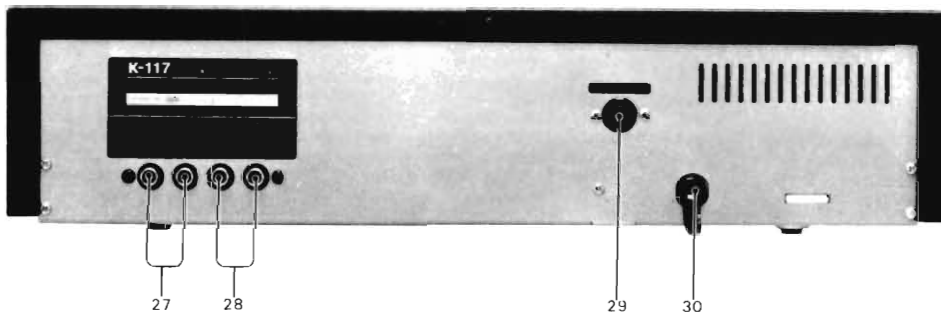
LUXMAN STEREO CASSETTE DECK

K-117



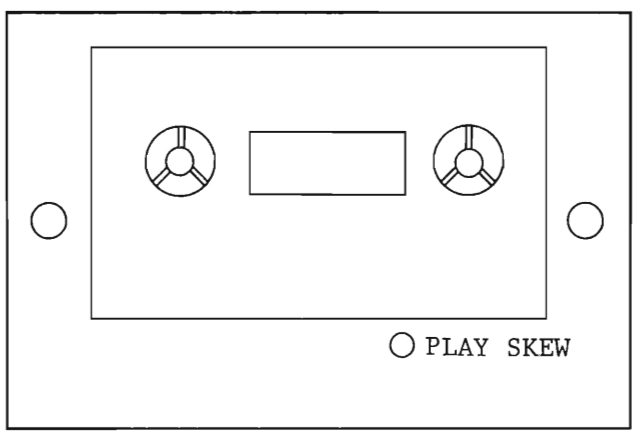


1. Fluorescent Peak Level Indicator
2. Bias Fine Control
3. Recording Input Selector
4. Recording Level Control
5. Mic Input Jacks
6. Output Level Control
7. Tape Counter
8. Counter Reest Button
9. Counter Memory Button
10. Timer Stand-by & Auto Repeat Switch
11. Dolby NR Switch
12. Tape Selector Switch
13. Play Button
14. PLAY Mode Indicator LED
15. Pause Button
16. Pause Mode Indicator LED
17. Record Button
18. Record Mode Indicator LED
19. Rewind Button
20. Stop Button
21. Fast Forward Button
22. Cassette Lid
23. Eject Button
24. Power Switch
25. Headphone Jack (PHONES)
26. Playback SKEW Adjustment Hole
27. Line Input Jacks
28. Output Jacks
29. Remote Control Socket
30. AC Power Cord



Head Azimuth Adjustment

↑ SLIDE UP AND PUT OUT.



LID CASSETTE HOLDER
FIG. 1

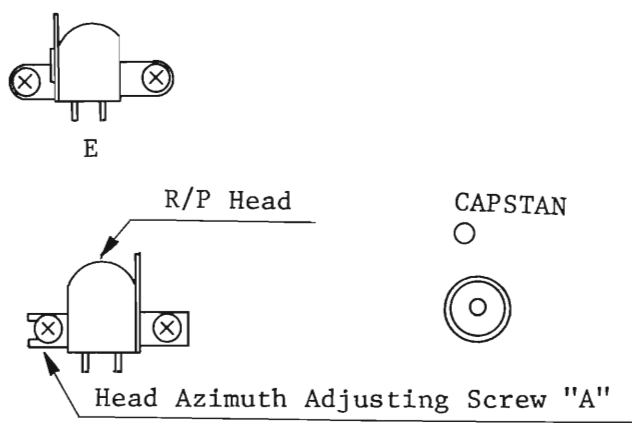


FIG. 2

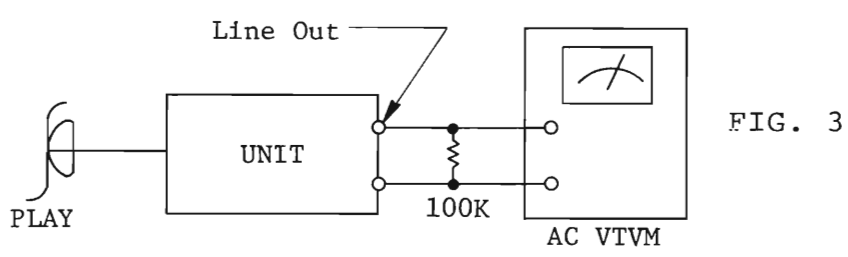


FIG. 3

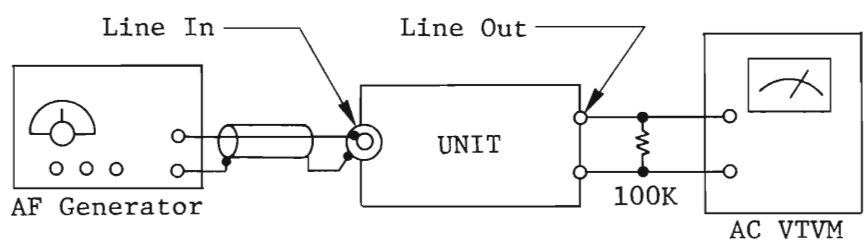


FIG. 4

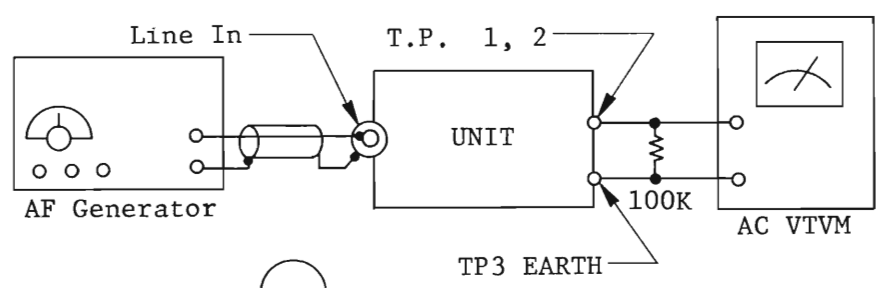


FIG. 5

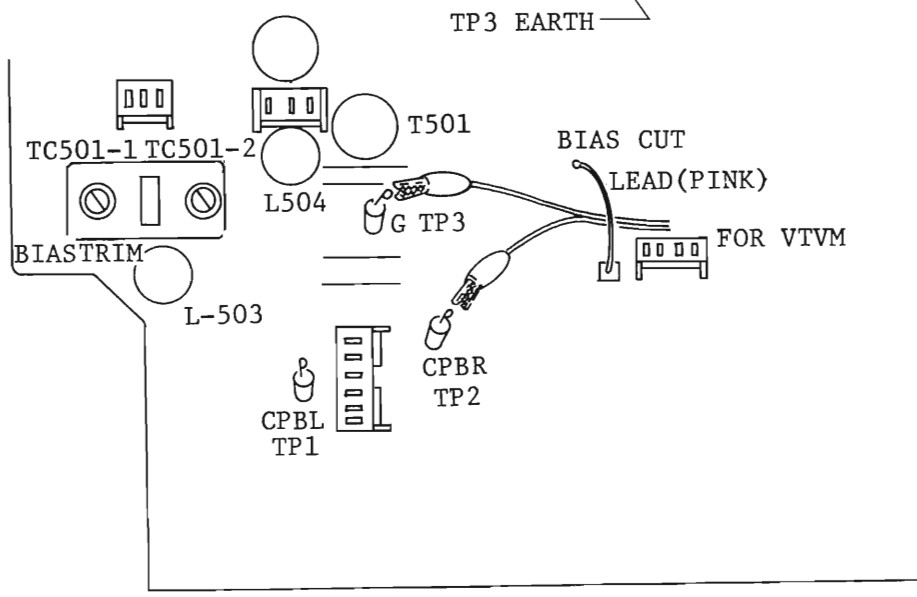
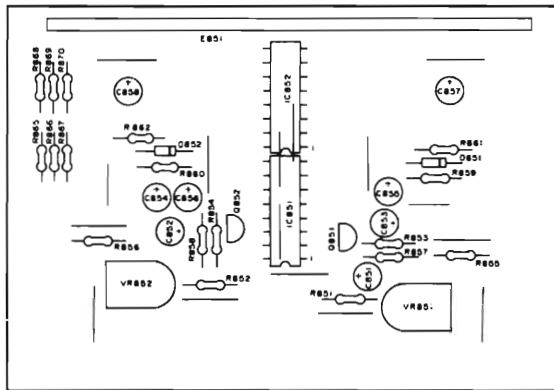
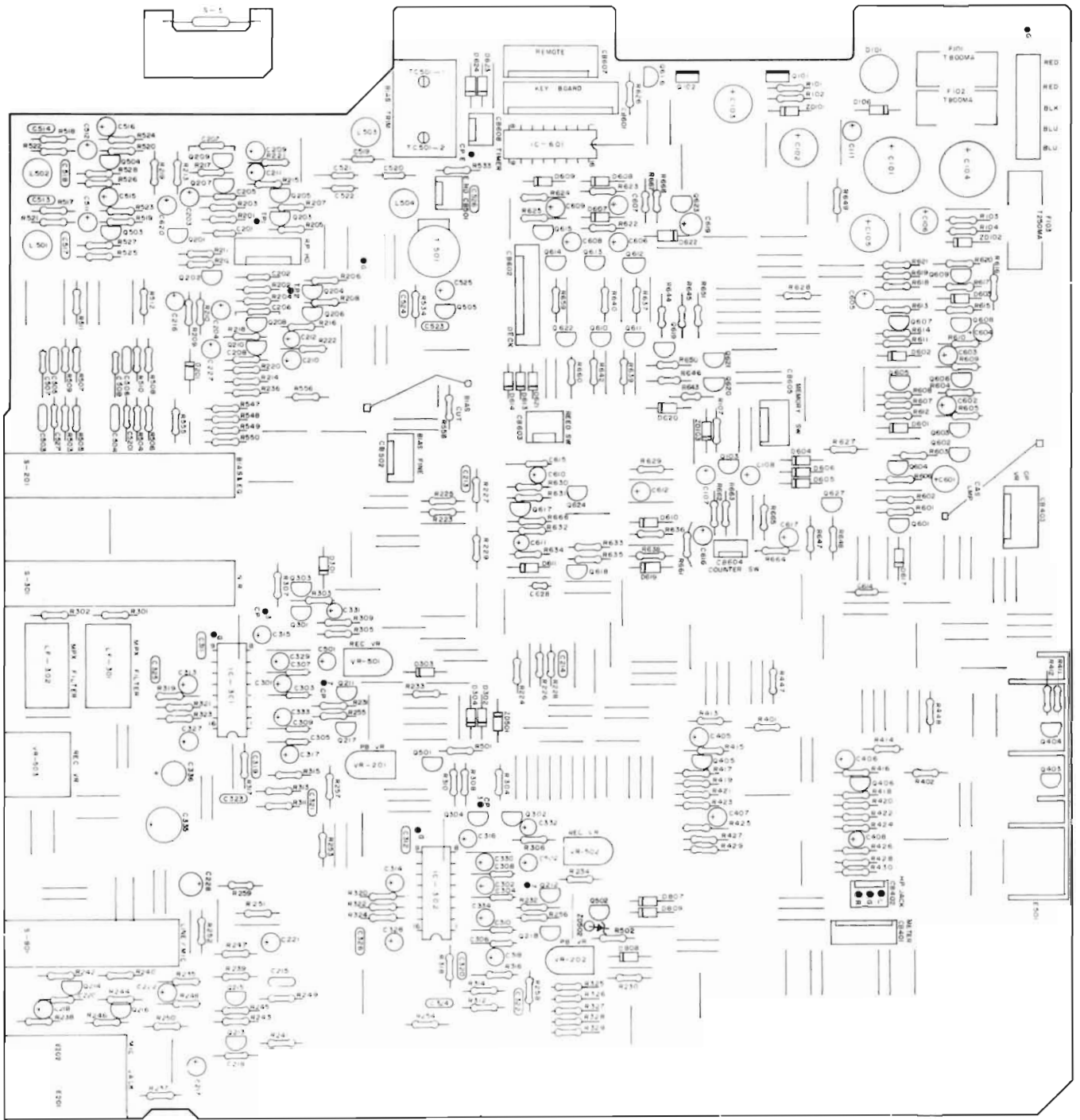


FIG. 6

K-117 Adjustment Procedure

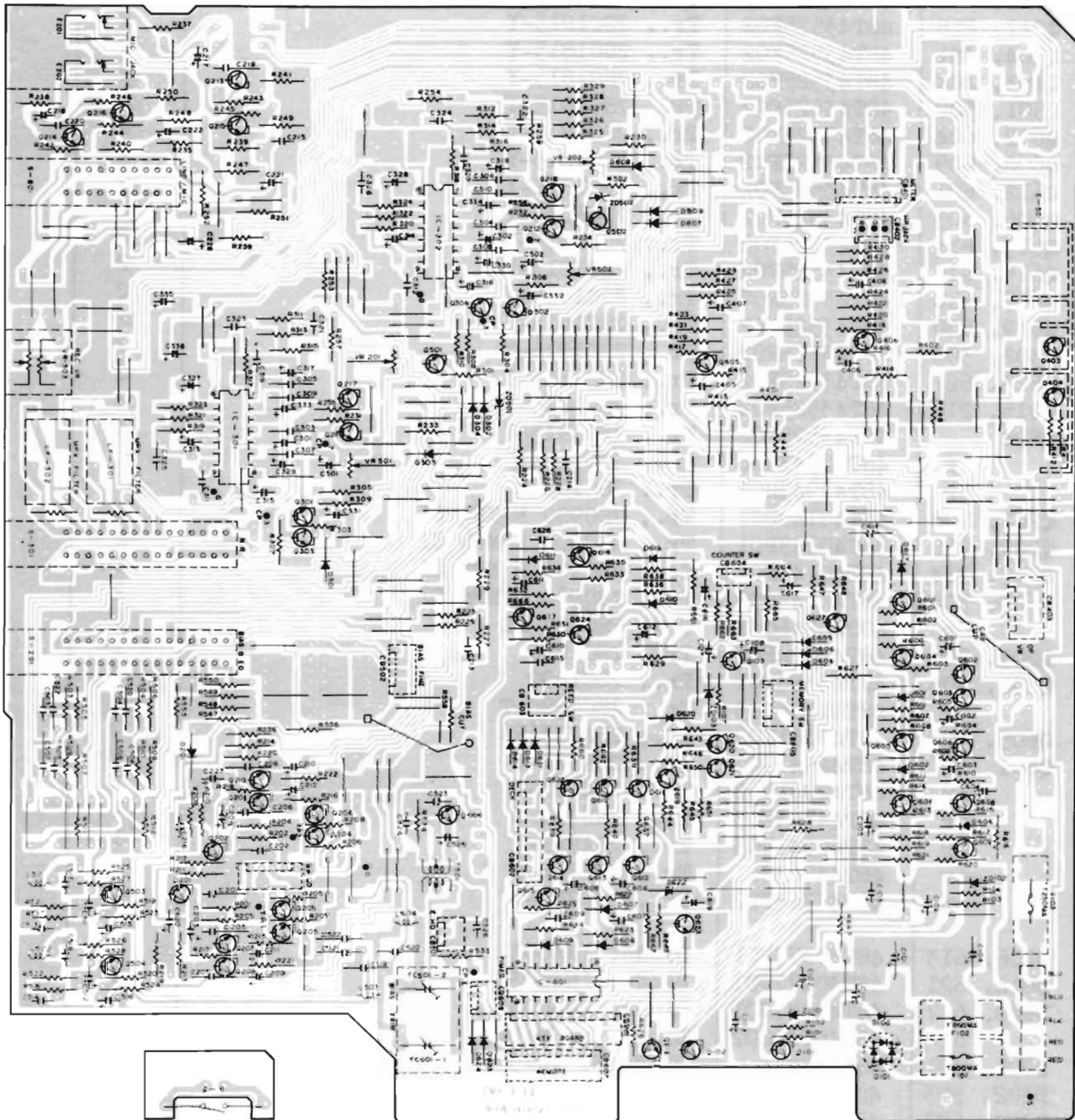
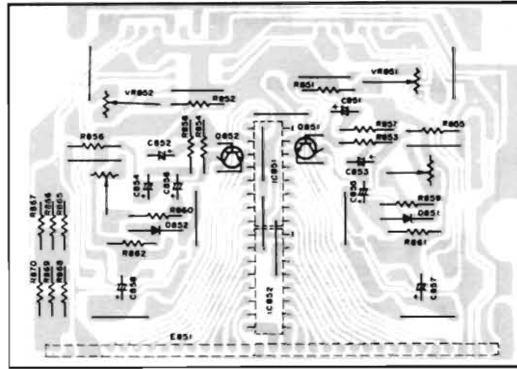
Step	Description	Mode Switch	Adjust Point	Test Point	Connection Instruction	Remarks
1	Head Azimuth Adjustment	Play Tape; Nor NR ; Off	"A" Screw	Line Out	Fig.1,2,3	Test Tape ; MTT-114 T.P. Output; Maximum of both channels (L&R)
2	Playback Level Adjustment	Play Tape; Nor NR ; Off	VR201(L) VR202(R)	Line Out	Fig. 3	Tape ; MTT-150 T.P. Output; 500mV
3	Input Adjustment	Record Tape; CY02 NR ; Off	Rec. VRL Rec. VRR	Line Out	Fig. 4	Line Input ; 400Hz, 300mV T.P. Output; 500mV
4	FL Meter Adjustment	Record Tape; CR02 NR ; Off	VR851(L) VR852(R)	SEE FL METER	Fig. 4	Line Input ; 400Hz, 300mV Adjust for 0 dB
5	CR02 Bias Adjustment	Record Tape; CR02 NR ; Off	TC501-1(L) TC501-2(R)	TP 1 TP 2 TP 3	Fig. 5 Fig. 6	Input Non Adjustment Level; 45mV
6	Recording Current Adjustment	Record Tape; CR02 NR ; Off Bias; Off	VR501(L) VR502(R)	TP 1 TP 2 TP 3	Fig. 5 Fig. 6	Bias Off Disconnect Bias Cut Wire Adjust Level to 10mV
7	Bias Readjustment	Record Tape; CR02 NR ; Off	TC501-1(L) TC501-2(R)	Line Out	Fig. 4	Bias Connect Bias Cut Wire Test Signal Line Input; -23dB from 0VV Meter Level Recording Level; 16KHz=400Hz OK 16KHz<400Hz Decrease Bias Current (See Step 5) 16KHz>400Hz Increase Bias Current (See Step 5)
8	Recording Current Readjustment	Record Tape; CR02 NR ; Off	VR501(L) VR502(R)	Line Out	Fig. 4	Test Signal Line Input; 400Hz, 300mV Set the Rec, VR to 500mV Recording Level; 500mV OK <500mV Increase Rec. Current (See Step 6) >400mV Decrease Rec. Current (See Step 6)
9	Check Frequency Response(NOR Metal)	Record Tape; NOR NR ; Off Metal	TC501(L) TC502(R)	Line Out	Fig. 4	Test Signal Line Input; -23dB from 0VV Meter Level Recording Level; NOR 15KHz=400Hz OK 15KHz<400Hz Decrease Bias Current (See Step 5) 15KHz>400Hz Increase Bias Current (See Step 5) Metal 16KHz=400Hz OK 16KHz<400Hz Decrease Bias Current (See Step 5) 16KHz>400Hz Increase Bias Current (See Step 5)



Specified Parts List

	CJ8LA030 (SK)	CJ8LA03A (SG)	CJ8LA03B (EK)	CJ8LA03C (EZ)	CJ8LA03F (UC)
Cover, Rear	15C44330F09	15C44330F11	15C44330F09	15C44330F09	15C44330F09
Bracket, Trans.	07B44334F02	07B44334F03	07B44334F02	07B44334F01	07B44334F01
A.C. Cord	28T43812P02	30T43811F01	28T43812P02	28T40916U01	28T40916U01
Trans. Power	25T44724F01	25T44724F02	25T44724F02	25T44724F02	25T50265F01
Switch, Power	40T45561F02	40T45561F02	40T45561F02	40T45561F02	40T47454F01
Panel, Power	Non Use	84B50154F01	84B50154F01	84B50154F01	Non Use
Insulator, Switch	Non Use	14A45761F01	14A45761F01	14A45761F01	Non Use
Stopper, Cord	43B41625J02	Non Use	43B41625J02	43B41625J01	43B41625J01
Holder, Fuse x 6	09A40961P01	09A40961P01	Non Use	Non Use	Non Use
Fuse 0.25A x 1	65T42077U0	65T42077U0	Non Use	Non Use	Non Use
Fuse 0.8A x 2	65T42077U15	65T42077U15	Non Use	Non Use	Non Use
Plug, Ground	Non Use	29A41814G01	Non Use	Non Use	Non Use
Washer, Tooth	Non Use	04S40072G01	Non Use	Non Use	Non Use
Label, Warning	Non Use	54A41204U01	Non Use	Non Use	54A42168J01
Label, AC Cord "A"	Non Use	54A43898U02	Non Use	Non Use	Non Use
Label, AC Cord "B"	Non Use	54A40327U01	Non Use	Non Use	Non Use
Label, Caution "A"	Non Use	Non Use	Non Use	Non Use	Non Use
Label, Caution "B"	Non Use	Non Use	Non Use	Non Use	54A41728P01
Label, CSA	Non Use	Non Use	Non Use	Non Use	54A41728P03
Label, LL NO.	Non Use	Non Use	Non Use	Non Use	54A44553G01
Label, ID	54B43797U19	54B43797U20	54B43797U19	54B43797U21	54C44558J02
Label, Safety	54R42762F02	Non Use	Non Use	Non Use	54B43797U21
Label, Voltage	54A44257U01	54A44257U02	54A44257U03	54A44257U04	Non Use
Card Warranty					54A44257U07

<MASTER BOARD>



SYMBOL NO.	PART NO.	DESCRIPTION	Q'TY	NOTE
		(Assy., Master Board)		
	84D47456F01	Panel, Master	1	
IC601	51T47110F01	IC., BA843	1	
IC301, 302	51T40113T01	IC., Dolby LML011N	2	
Q101, 102	48T42620F02	Tr., 2SD880-Y	2	
Q103, 405	48T40832F03	Tr., 2SC1318NC-R	2	
Q405, 505	48T40832F03	Tr., 2SC1318NC-R	2	
Q610	48T40832F03	Tr., 2SC1318NC-R	1	
Q511, 612	48T40832F03	Tr., 2SC1318NC-R	2	
Q201, 202	48T43525F02	Tr., 2SC1815-Y	2	
Q211, 212	48T43525F02	Tr., 2SC1815-Y	2	
Q217, 218	48T43525F02	Tr., 2SC1815-Y	2	
Q304, 301	48T43525F02	Tr., 2SC1815-Y	2	
Q403, 404	48T43525F02	Tr., 2SC1815-Y	2	
Q501, 502	48T43525F02	Tr., 2SC1815-Y	2	
Q602, 604	48T43525F02	Tr., 2SC1815-Y	2	
Q608, 609	48T43525F02	Tr., 2SC1815-Y	2	
Q612, 621	48T43525F02	Tr., 2SC1815-Y	2	
Q606, 603	48T43525F02	Tr., 2SC1815-Y	2	
Q613, 614	48T43525F02	Tr., 2SC1815-Y	2	
Q615, 616	48T43525F02	Tr., 2SC1815-Y	2	
Q617, 618	48T43525F02	Tr., 2SC1815-Y	2	
Q619, 620	48T43525F02	Tr., 2SC1815-Y	2	
Q302, 303	48T43525F02	Tr., 2SC1815-Y	2	
Q623, 627	48T43525F02	Tr., 2SC1815-Y	2	
Q215, 216	48T43525F02	Tr., 2SC1815-Y	2	
Q624	48T43525F02	Tr., 2SC1815-Y	1	
	or	48T42943U06	Tr., 2SC1684Q	35
	or	48T42943U01	Tr., 2SC1684R	35
Q207, 208	48T40149P01	Tr., 2SC900 E NPN SI	2	
Q209, 210	48T40149P01	Tr., 2SC900 E NPN SI	2	
Q213, 214	48T40149P01	Tr., 2SC900 E NPN SI	2	
Q503, 504	48T40149P01	Tr., 2SC900 E NPN SI	2	
	or	48S40246G01	Tr., 2SC732 BL	8
Q203, 204	48T43394P01	Tr., 2SC1890	2	
Q205, 206	48T43394P01	Tr., 2SC1890	2	
	or	48T41196U03	Tr., 2SC1980-T	4
Q605, 607	48T40081T03	T ⁿ ., 2SA733(P)	2	
Q601	48T42941U01	Tr., 2SA921-S	1	
	or	48T42941U02	Tr., 2SA921-T	1
	or	48T44763F03	Tr., 2SB788-U	1
	or	48T42941U03	Tr., 2SA921-U	1
	or	48T44763F01	Tr., 2SB788-S	1
	or	48T44763F02	Tr., 2SB788-T	1
D106, 613	48T40477U01	Diode, IN4003	2	
D614, 621	48T40477U01	Diode, IN4003	2	
D620, 617	48T40477U01	Diode, IN4003	2	
	or	48C40235G02	Diode, SI 10 E2	6
D201, 301	48S134816	Diode SI IS1555	2	
D302, 303	48S134816	Diode SI IS1555	2	
D304, 622	48S134816	Diode SI IS1555	2	
D601, 602	48S134816	Diode SI IS1555	2	

SYMBOL NO.	PART NO.	DESCRIPTION	Q'TY	NOTE
D603, 604	48S134816	Diode SI IS1555	2	
D605, 606	48S134816	Diode SI IS1555	2	
D607, 608	48S134816	Diode SI IS1555	2	
D609, 610	48S134816	Diode SI IS1555	2	
D807, 808	48S134816	Diode SI IS1555	2	
S809, 619	48S134816	Diode SI IS1555	2	
D611, 623	48S134816	Diode SI IS1555	2	
D624	48S134816	Diode SI IS1555	1	A
	or 48T44813F01	Diode MA 165TA	23	A
D101	48T47455F01	Diode Bridge WL02	1	
ZD103	48T40150U31	Diode Zenner HZ6B-1	1	
ZD102	48T40150U65	Diode Zenner HZ12B-2	1	
ZD101	48T40150U80	Diode Zenner HZ20-2	1	
S201, 301	40T42082F01	SW. Lever 6C-3p	2	
S801	40T44478F01	SW. Lever 4C-3p	1	
VR201,202	18C42061J15	Res., Variable 50K	2	
VR501,502	18C42061J14	Res., Variable 10K	2	
VR503,504	18T44716P01	Res., Variable 50K	1	
TC501	20T43668F01	Cap., Trimmet	1	
T501	25T44260F01	Trans., O.S.C. (HI-B)	1	
LF301,302	51T42537U01	Filter, MPX LP-V20	2	
L501, 502	24S41449F01	Induc. Radial 5600μH	2	
L503, 504	24T44499P01	Coil Inductor 27mH	2	
E201, 202	9T41359F02	Jack Mic	1	
E501	9B44393P01	Plate Phone	1	
E401	9T40027F01	Jack HD Phone	1	
F103	65T42077U10	Fuse, Semko (250mA)	1	
F101, 102	65T42077U15	Fuse, Semko(800mA)	2	
ZD501,502	48S41873J09	Diode Zenner RD6.2E	2	
	or 48T40150U33	Diode Zenner HZ6B-3	2	
	or 48T40150U32	Diode Zenner HZ6B-2	2	
R533	6S44593P01	Res., C.F. 2.2	1	
R427, 428	6S44593P37	Res., C.F. 68	2	
R550, 429	6S44593P37	Res., C.F. 68	2	
R430	6S44593P37	Res., C.F. 68	1	
R203, 204	6S44593P41	Res., C.F. 100	2	
R215, 216	6S44593P45	Res., C.F. 150	2	
R527, 528	6S44593P45	Res., C.F. 150	2	
R628, 555	6S44593P39	Res., C.F. 82	2	
R313, 314	6S44593P47	Res., C.F. 180	2	
R626	6S44593P33	Res., C.F. 82	1	
R259	6S44593P57	Res., C.F. 470	1	
R249, 250	6S44593P53	Res., C.F. 330	2	
R401, 402	6S44593P53	Res., C.F. 330	2	
R648, 647	6S44593P53	Res., C.F. 330	2	A
R107, 241	6S44593P57	Res., C.F. 470	2	
R242	6S44593P57	Res., C.F. 470	1	
R659, 640	6S44593P59	Res., C.F. 560	2	

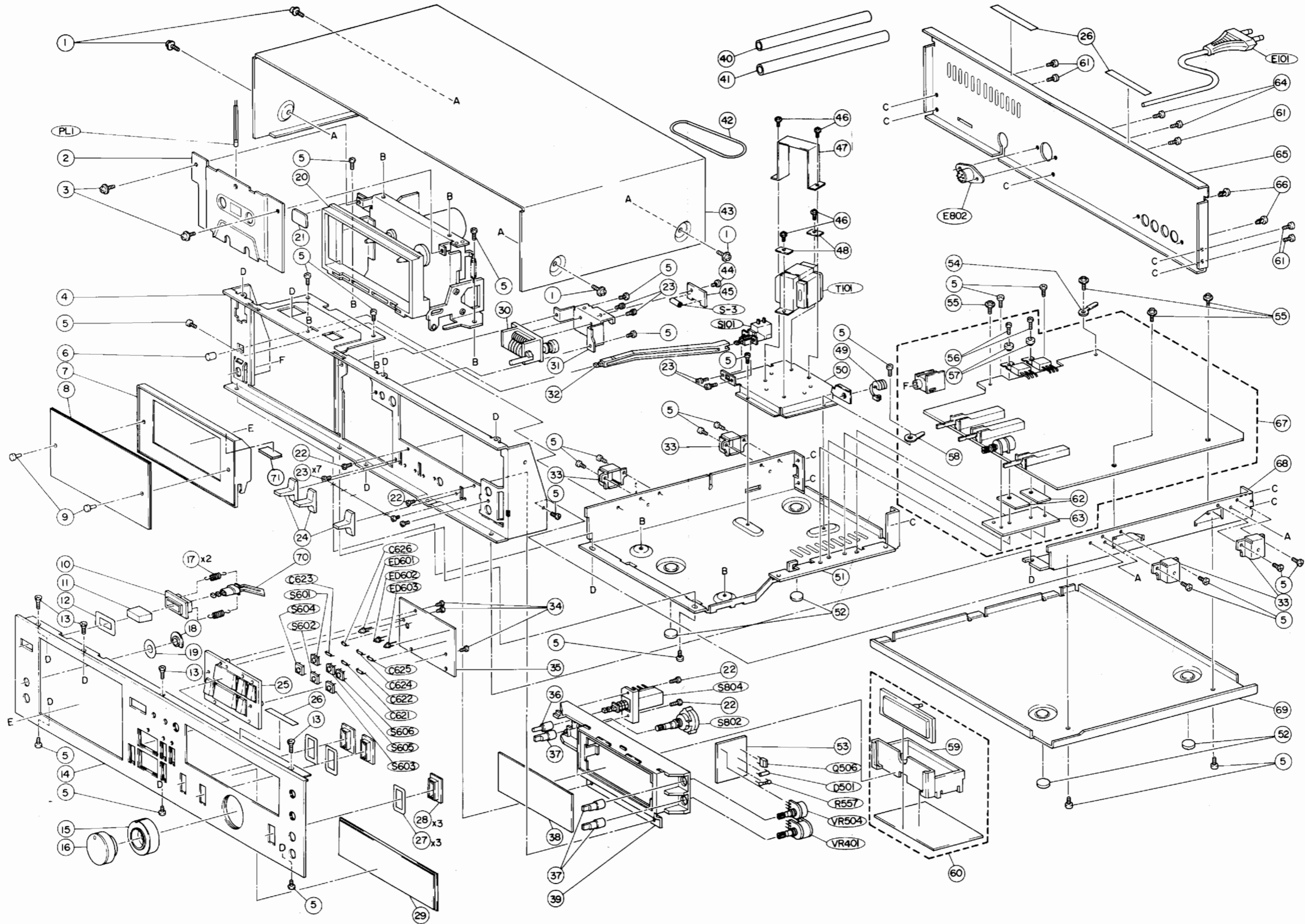
SYMBOL NO.	PART NO.	DESCRIPTION	Q'TY	NOTE
R637	6S44593P59	Res., C.F. 560	1	
R417, 418	6S44593P61	Res., C.F. 680	2	
R419, 420	6S44593P61	Res., C.F. 680	2	
R421, 422	6S44593P61	Res., C.F. 680	2	
R423, 424	6S44593P61	Res., C.F. 680	2	
R103, 104	6S44593P61	Res., C.F. 680	2	
R221, 222	6S44593P65	Res., C.F. 1K	2	
R447, 448	6S44593P65	Res., C.F. 1K	2	
R413, 414	6S44593P55	Res., C.F. 390	2	A
R558	6S44593P68	Res., C.F. 390	1	A
R525, 526	6S44593P69	Res., C.F. 1.5K	2	
R229, 230	6S44593P73	Res., C.F. 2.2K	2	
R639, 642	6S44593P73	Res., C.F. 2.2K	2	
R660, 612	6S44593P73	Res., C.F. 2.2K	2	
R257, 258	6S44593P77	Res., C.F. 3.3K	2	
R317, 318	6S44593P77	Res., C.F. 3.3K	2	
R627, 629	6S44593P77	Res., C.F. 3.3K	2	
R556	6S44593P77	Res., C.F. 3.3K	1	
R207, 208	6S44593P81	Res., C.F. 4.7K	2	
R205, 206	6S44593P81	Res., C.F. 4.7K	2	
R247, 248	6S44593P81	Res., C.F. 4.7K	2	
R411, 412	6S44593P81	Res., C.F. 4.7K	2	
R601, 606	6S44593P81	Res., C.F. 4.7K	2	
R634	6S44593P81	Res., C.F. 4.7K	1	
R101, 102	6S44593P75	Res., C.F. 2.7K	2	
R633, 649	6S44593P85	Res., C.F. 6.8K	2	A
R255, 256	6S44593P86	Res., C.F. 7.5K	2	
R253, 254	6S44593P87	Res., C.F. 8.2K	2	
R611	6S44593P87	Res., C.F. 8.2K	1	
R209, 210	6S44593P89	Res., C.F. 10K	2	
R211, 212	6S44593P89	Res., C.F. 10K	2	
R233, 234	6S44593P89	Res., C.F. 10K	2	
R237, 238	6S44593P89	Res., C.F. 10K	2	
R425, 426	6S44593P89	Res., C.F. 10K	2	
R501, 502	6S44593P89	Res., C.F. 10K	2	
R602, 607	6S44593P89	Res., C.F. 10K	2	
R608, 609	6S44593P89	Res., C.F. 10K	2	
R610, 622	6S44593P89	Res., C.F. 10K	2	
R623, 631	6S44593P89	Res., C.F. 10K	2	
R661, 662	6S44593P89	Res., C.F. 10K	2	
R632	6S44593P91	Res., C.F. 12K	1	
R223, 224	6S44593P92	Res., C.F. 13K	2	
R225, 226	6S44593P95	Res., C.F. 18K	2	
R523, 524	6S44593P97	Res., C.F. 22K	2	
R603, 604	6S44593P97	Res., C.F. 22K	2	
R614, 615	6S44593P97	Res., C.F. 22K	2	
R617, 613	6S44593P97	Res., C.F. 22K	2	
R618, 624	6S44593P97	Res., C.F. 22K	2	
R648, 644	6S44593P97	Res., C.F. 22K	2	A
R645, 651	6S44593P97	Res., C.F. 22K	2	
R219, 220	6S44593P97	Res., C.F. 22K	2	
R616, 665	6S44593P97	Res., C.F. 22K	2	
R236, 517	6S44593P99	Res., C.F. 27K	2	
R518	6S44593P99	Res., C.F. 27K	1	A
R306, 305	6S44593P93	Res., C.F. 15K	2	A
R235, 619	6S44594P02	Res., C.F. 33K	2	

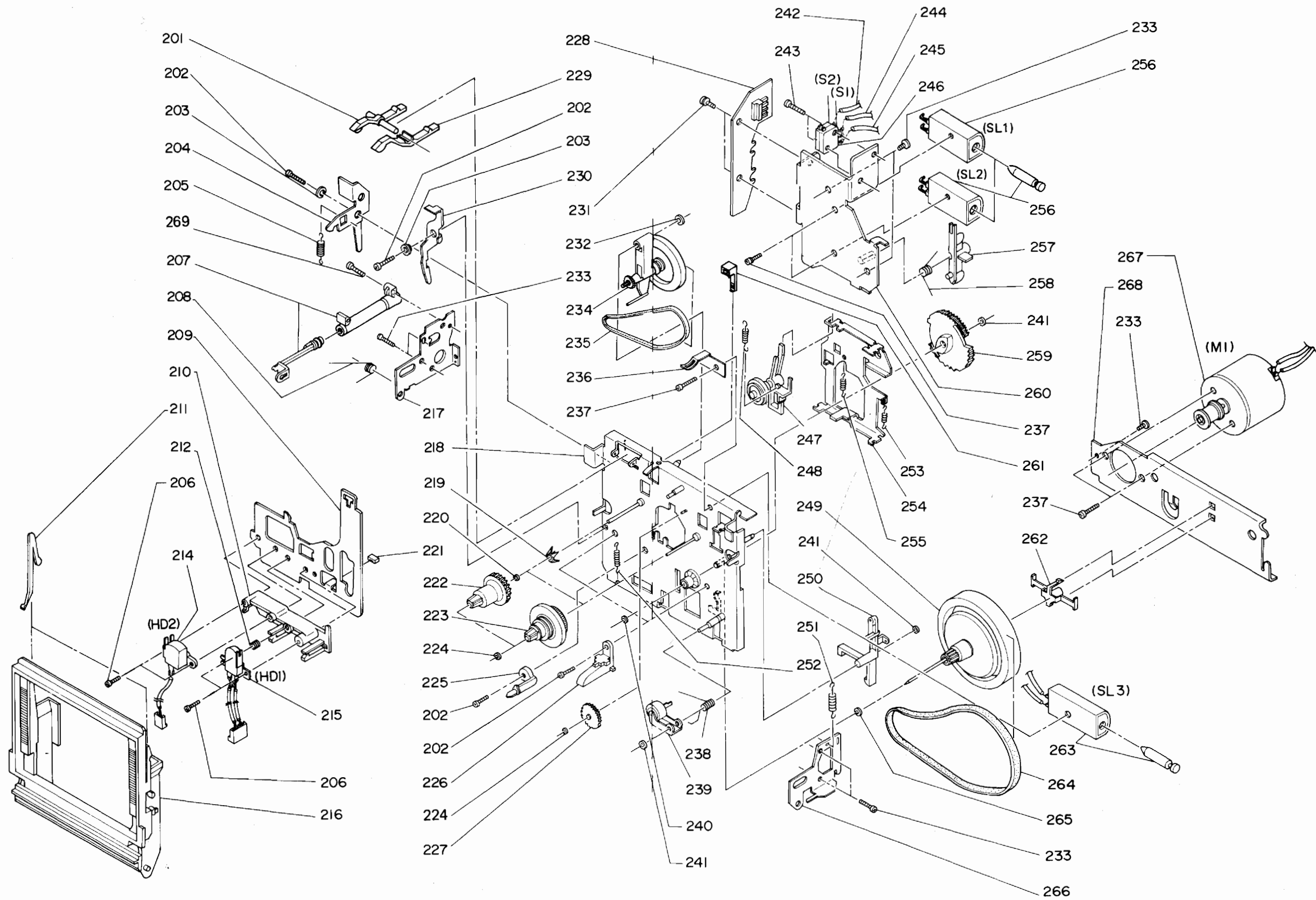
SYMBOL NO.	PART NO.	DESCRIPTION	Q'TY	NOTE
R621	6S44594P02	Res., C.F. 33K	1	
R415, 416	6S44594P04	Res., C.F. 39K	2	
R309, 310	6S44594P06	Res., C.F. 47K	2	
R315, 316	6S44594P06	Res., C.F. 47K	2	
R503, 504	6S44594P06	Res., C.F. 47K	2	
R605, 643	6S44594p)6	Res., C.F. 47K	2	
R646, 650	6S44594P06	Res., C.F. 47K	2	
R638	6S44594P06	Res., C.F. 47K	1	A
R664, 635	6S44594P06	Res., C.F. 47K	2	
R668, 667	6S44594P06	Res., C.F. 47K	2	
R507, 508	6S44594P08	Res., C.F. 56K	2	
R511, 512	6S44594P10	Res., C.F. 68K	2	
R303, 304	6S44594P04	Res., C.F. 39K	2	
R307, 308	6S44594P04	Res., C.F. 39K	2	A
R231, 232	6S44594P93	Res., C.F. 15K	2	
R534, 620	6S44593P93	Res., C.F. 15K	2	
R666, 630	6S44593P93	Res., C.F. 15K	2	
R201, 202	6S44594P14	Res., C.F. 100K	2	
R213, 214	6S44594P14	Res., C.F. 100K	2	
r239, 240	6S44594P14	Res., C.F. 100K	2	
R251, 252	6S44594P14	Res., C.F. 100K	2	
R301, 302	6S44594P14	Res., C.F. 100K	2	
R505, 506	6S44594P14	Res., C.F. 100K	2	
R521, 522	6S44594P14	Res., C.F. 100K	2	
R663, 625	6S44594P14	Res., C.F. 100K	2	A
R509, 510	6S44594P06	Res., C.F. 47K	2	
R636	6S44594P02	Res., C.F. 33K	1	A
R217, 218	6S44594P24	Res., C.F. 270K	2	
R245, 246	6S44594P24	Res., C.F. 270K	2	
R319, 320	6S44594P24	Res., C.F. 270K	2	
R323, 324	6S44594P24	Res., C.F. 270K	2	
R243, 244	6S44594P26	Res., C.F. 330K	2	
R321, 322	6S44594P32	Res., C.F. 560K	2	
R227, 228	6S44594P38	Res., C.F. 1M	2	
R311, 312	6S44594P38	Res., C.F. 1M	2	
R519, 520	6S44594P40	Res., C.F. 1.2M	2	
R325, 326	6S44593P70	Res., C.F. 1.6M	2	
R327, 328	6S44593P70	Res., C.F. 1.6M	2	
R329	6S44593P70	Res., C.F. 1.6M	1	
C207, 208	8S44505P29	Cap., Cer. 47P	2	
C519, 520	8S44505P35	Cap., Cer. 82P	2	
C303, 304	8S44505P41	Cap., Cer. 220P	2	
C305, 306	8S44505P41	Cap., Cer. 220P	2	
C507, 508	8S44505P41	Cap., Cer. 220P	2	
C521, 522	8S44505P41	Cap., Cer. 220P	2	
C201, 202	8S44505P44	Cap., Cer. 390P	2	
C205, 206	8S44505P45	Cap., Cer. 470P	2	
C219, 220	8S44505P45	Cap., Cer. 470P	2	
C527, 528	8S44504P41	Cap., Cer. 220P	2	
C307, 308	8S44505P49	Cap., Cer.1000P	2	
C309, 310	8S44505P49	Cap., Cer.1000P	2	
C615, 614	8S44505P61	Cap., Cer.10000P	2	
C526	8T44481F37	Cap., Polystyrol 0.0010	1	A
C505, 506	8S40805F05	Cap., Cer. 470P	2	
C503, 504	8S40656F06	Cap., Mylar 0.0027	2	

SYMBOL NO.	PART NO.	DESCRIPTION	Q'TY	NOTE
C213, 214	8S40656F08	Cap., Mylar 0.0039	2	
C319, 320	8S40656F09	Cap., Mylar 0.0047	2	
C321, 322	8S40656F10	Cap., Mylar 0.0056	2	
C523	8S40656F04	Cap., Mylar 0.0018	1	A
C524	8S40656F05	Cap., Mylar 0.0022	1	A
C323, 324	8S40656F18	Cap., Mylar 0.027	2	
C311, 312	8S40656F21	Cap., Mylar 0.047	2	
C517, 518	8S40656F13	Cap., Mylar 0.010	2	
C513, 514	8S40656F24	Cap., Mylar 0.082	2	
C325, 326	8S41422F25	Cap., Myl 0.1	2	
C327, 328	23T42478F21	Cap., Elec. 0.33-50V	2	
C605, 616	23S40657F28	Cap., Elec. 1-50V	2	
C111	23S40657F28	Cap., Elec. 1-50V	1	
C217, 218	23S40657F16	Cap., Elec. 4.7-25V	2	
C203, 204	23S40657F16	Cap., Elec. 4.7-25V	2	
C227	23S40657F16	Cap., Elec. 4.7-25V	1	A
C511, 512	23S40657F16	Cap., Elec. 4.7-25V	2	
C515	23S41198U09	Cap., Elec. 4.7-50V	1	A
C602, 603	23S41198U09	Cap., Ely 4.7-50V	2	A
C620, 604	23S41198U09	Cap., Ely 4.7-50V	2	A
C516	23S41198U09	Cap., Ely 4.7-50V	1	A
C107, 108	23S40657F10	Cap., Elec. 10-16V	2	
C210, 221	23S40657F10	Cap., Elec. 10-16V	2	
C222, 313	23S40657F10	Cap., Elec. 10-16V	2	
C314, 315	23S40657F10	Cap., Elec. 10-16V	2	
C316, 317	23S40657F10	Cap., Elec. 10-16V	2	
C318, 329	23S40657F10	Cap., Elec. 10-16V	2	
C330, 331	23S40657F10	Cap., Elec. 10-16V	2	
C332, 333	23S40657F10	Cap., Elec. 10-16V	2	
C334	23S40657F10	Cap., Elec. 10-16V	1	
C406, 405	23S40657F29	Cap., Elec. 2.2-50V	2	
C610, 617	23S40657F10	Cap., Elec. 10-16V	2	
C216, 501	23S40657F10	Cap., Elec. 10-16V	2	
C502, 215	23S40657F10	Cap., Elec. 10-16V	2	
C612, 606	23S40657F05	Cap., Elec. 22-10V	2	
C607	23D44333G12	Cap., Ely 22-10V	1	
C619, 211	23S40657F07	Cap., Elec. 47-10V	2	
C608	23S40657F07	Cap., Elec. 47-10V	1	
C209	23D44333G08	Cap., Ely 10-16V	1	
C106	23S40657F14	Cap., Elec. 100-16V	1	
C601	23S40657F21	Cap., Elec. 100-25V	1	
C611	23D44333G36	Cap., Ely 220-10V	1	A
C407, 408	23D44333F09	Cap., Ely 220-10V	2	
C102, 103	23D44333G38	Cap., Ely 220-25V	2	
C336	23S41198U55	Cap., Elec. 470-10V	1	
C105, 335	23S41198U56	Cap., Elec. 470-16V	2	
C101	23S41198U59	Cap., Elec. 470-50V	1	
C104	23S41198U72	Cap., Elec. 2200-25V	1	
C301, 302	23S41198U03	Cap., Elec. 1-50V	2	
C212	23S41198U26	Cap., Elec. 47-10V	1	
C228	23S41198U35	Cap., Elec. 100-25V	1	A
C628	21C45322G31	Cap., Cer. 10000-50V	1	
R547, 548	6S44593P55	Res., C.F. 390	2	A
R549	6S44593P55	Res., C.F. 390	1	A
R513, 514	6S44593P41	Res., C.F. 100	2	A
C525	23S41198U27	Cap., Elec. 4.7-16V	1	A
C609	23S40657F17	Cap., Elec. 10-25V	1	A

SYMBOL NO.	PART NO.	DESCRIPTION	Q'TY	NOTE
		(Assy., F.L. Meter Panel)		
	84C45001F01	Panel FL Meter	$\frac{1}{4}$	
E851	65T44406U01	FL Meter 21AW	1	
D851, 852	48T43982F01	Diode GE OA95	2	
VR851,852	18C42061J15	Res., Variable 50K	2	
IC851,852	51T42626F01	IC HA12019	2	
Q851, 852	48T43525F02	Tr., 2SC1815-Y	2	
R851, 852	6S44593P97	Res., C.F. 22K	2	
R853, 854	6S44954P27	Res., C.F. 360K	2	
R855, 856	6S44593P71	Res., C.F. 1.8K	2	
R857, 858	6S44594P18	Res., C.F. 150K	2	
R861, 862	6S44593P85	Res., C.F. 6.8K	2	
R859, 860	6S44594P50	Res., C.F. 3.3M	2	
R865, 866	6S44593P47	Res., C.F. 180	2	
R867, 868	6S44593P47	Res., C.F. 180	2	
R869, 870	6S44593P47	Res., C.F. 180	2	
C857, 858	23T40475U03	Cap., Ely 0.33-50V	2	
C851, 852	23S40657F10	Cap., Elec. 10-16V	2	
C853, 854	23S40657F10	Cap., Elec. 10-16V	2	
C855, 856	23S40657F10	Cap., Elec. 10-16V	2	

SYMBOL NO.	PART NO.	DESCRIPTION	Q'TY	NOTE
1	3S40036U01	Scr. Tap Tite (M4x8)	4	
2	15B44924F05	Cover, Dust	1	
3	3S40036U03	Scr., Tap Tite (M3x60)	2	
4	27D47360F01	Chassis, Front	1	
5	3S44205G05	Scr., Tap Tite (M3x5)	26	
6	36A47362F01	Knob, Power	1	
7	7C47355F01	Frame Door	1	
8	61A47357F01	Crystal, Door	1	
9	5B41635J04	Rivet Push	2	
10	7A45558F02	Frame, Eject	1	
11	36A44340F02	Knob, Power	1	
12	64B45609F03	Plate, Adhes	1	
13	3S44205G16	Scr., Tap Tite (M3x6)	4	
14	64D47354F01	Panel, Front	1	
15	36R47448F01	Knob, Control (R)	1	
16	36R47447F01	Knob, Control (L)	1	
17	41A45559F01	Spring, Eject	2	
18	7R47364F01	Frame, Power	1	
19	64B45609F02	Plate, Adhes	1	
20	81T44833F01	FL87E010 Cassette Deck	1	
21	43A45760F01	Spacer, Eject	1/10	A
22	3S40012G28	Scr., Tapping (M3x8)	4	
23	3C40014G04	Scr., Mch. (M3x6)	11	
24	36R42018F02	Knob, Lever	3	
25	36C41948F01	Knob Logic Control	1	
26	75B44632G04	Pad. Cushion	3	
27	64B45609F05	Plate, Adhes	3	
28	7R47365F01	Frame, Knob	3	
29	61A47358F01	Crystal, Meter	1	A
30	72T43628F01	Tape, Counter	1	S803
31	7B44923F01	Bkt., Counter	1	
32	45B44337F01	Lever, Knob	1	
33	7A43780U01	Bkt., Side	4	
34	3S40012G55	Scr., Tapping (M3x8)	3	
35	84B47458F01	Panel, Key Board	1	
36	36R47363F01	Knob Push	1	
37	36R43801U01	Knob Control	3	
38	91A47359F01	Filter, Acryl	1	
39	7C47356F01	Frame, Meter	1	
40	37S44468G12	Tube UL (85)	1	
41	37S44468G19	Tube UL (150)	1	
42	42A45366F01	Belt, Counter	1	
43	15D47361F01	Cover, Top	1	
44	3S40036U06	Scr., Tap Tite (M3x6)	1	
45	84D47456F04	Panel, Reed SW	1	
46	3S40036U07	Scr., Tap Tite (M4x12)	4	
47	7A45749F01	Support, Trans	1	
48	7A40871F01	Support, Trans	2	
49	43B41625J02	Support, Cord	1	
50	7B44334F02	Bkt., Trans	1	
51	27C44535F01	Chassis, Bottom	1	
52	75A44348F03	Pad, Felt	4	A
53	84B47458F02	Panel, Key Board	1	
54	29A737272	Lug, Wrap Around	1	
55	3C42723U01	Scr., Cup (M3x6)	4	
56	3A43146G01	Scr., Mch. (M2x6)	2	





SYMBOL NO.	PART NO.	DESCRIPTION	Q'TY	NOTE
57	43A43182P01	Spacer, Tr.	2	
58	29A41814G01	Lug	1	
59	7C44999F01	Frame P. C. B.	1	
60	1V45700F35	Assy., F.L. Meter P.C.B.	1	
61	3S44205G04	Scr., Tap Tite (M3x5)	5	
62	14A40472G02	Insulator, Tr.	2	
63	7A44482F01	Bkt., Heat Sink	1	
64	3S40011G91	Scr., Mch. (M2.6x5)	2	
65	15C44330F09	Cover, Rear.	1	
66	5B41635J02	Rivet, Push	2	
67	1V51300G64	Assy., Master Board	1	A
68	27C44329F01	Chassis, Side	1	
69	15C44331F01	Cover, Bottom	1	A
70	45A44338F01	Lever, Eject	1	
71	75B44632G06	Pad, Cushion	1	A
201	FR357-12	Arm, Record	1	A
202	KG194-12	Screw, Tap Tite (M3x6)	5	
203	FM296-11	Spacer	2	
204	FC11H-11	Lock Arm Eject	1	A
205	FK573-11	Spring, Arm Lock	1	
206	FG137-15	Screw, F-Lock (M2)	4	
207	FP472-11	Assembly, Dumper	1	
208	FK568-11	Spring, Door	1	
209	FR345-11	Base, Head	1	
210	FM283-11	Space, Head	1	
211	FK553-12	Hold, Spring	2	A
212	FK572-11	Spring Azimuth	1	
213	-	Not Used		A
214	F030-045	Head, Erase	1	
215	F029-090	Head, Recording/Playback	1	
216	FR369-11	Frame, Door	1	
217	FR349-12	Bracket, Dumper	1	A
218	F011-106	Assembly, Chassis	1	
219	FK579-11	Spring, Back Tension	2	
220	FJ111-19	Slider, Polyester ($\phi 2 \times 0.13$)	1	
221	FP464-11	Pad, Cushion	1	
222	FP487-12	Assembly, Supply Reel	1	A
223	FP471-11	Assembly, Take-up Reel	1	
224	FJ123-14	Washer, Lock ($\phi 17$)	3	
225	FR358-12	Reference, Guide	1	A
226	FR360-12	Guide, Cassette	2	A
227	FN154-12	Gear, Idler	1	A
228	F217-011	Panel, Connector	1	
229	FR356-11	Arm, Switch	1	
230	FR352-11	Lever, Safety	1	
231	FG193-11	Screw, Tap Tite W/Washer(M3)	2	
232	FJ123-19	Washer, Lock ($\phi 3.5$)	1	
233	KG194-46	Screw, Tap Tite (M3x4)	7	
234	FP470-11	Assembly, Clutch	1	
235	FP463-11	Belt, Sub.	1	
236	FK551-11	Spring, Cassette	1	

SYMBOL NO.	PART NO.	DESCRIPTION	Q'TY	NOTE
237	FG114-15	Screw, Washer	5	
238	FK569-12	Spring, Pinch Roller	1	A
239	FO14-053	Assembly, Pinch Roller	1	
240	FJ141-12	Shield, Oil	1	
241	FJ123-15	Washer, Lock ($\phi 2.6$)	3	
242	WG140-10	Tube, Vinyl	1	
243	FG143-26	Screw, Machine (M2.6)	2	
244	WG14T-04	Tube, Vinyl	1	
245	WG14R-06	Tube, Vinyl	1	
246	FE173-11	Switch, Slide	2	
247	FP469-11	Assembly, Idler	1	
248	FK575-11	Spring, Play Idler	1	
249	FP467-11	Assembly, Flywheel	1	
250	FR359-12	Arm, Play Solenoid	1	A
251	FK576-12	Spring, Play Solenoid Arm	1	A
252	FK578-11	Spring, Head Base Push	1	
253	FK574-11	Spring, Assist Base	1	
254	FR346-11	Base, Assist	1	
255	FK577-11	Spring, Head Base	1	
256	PBC16051	Solenoid	2	
257	FR355-11	Arm, FF Solenoid	1	
258	FK570-12	Spring, Solenoid Bracket	1	A
259	FN153-11	Gear, Play	1	
260	F214-011	Bracket, Solenoid	1	
261	FH126-11	Band, Connector	1	
262	FM281-11	Spacer, Flywheel	1	
263	FO23-025	Solenoid	1	
264	FP462-11	Belt, Main	1	
265	FJ111-14	Slider, Polyester ($\phi 2.5 \times 0.5$)	1	
266	FR350-11	Bracket, Door	1	
267	FO64-074	Motor	1	
268	FR347-11	Bracket, Motor	1	
269	UG11D-11	Screw, Tap Tite	1	

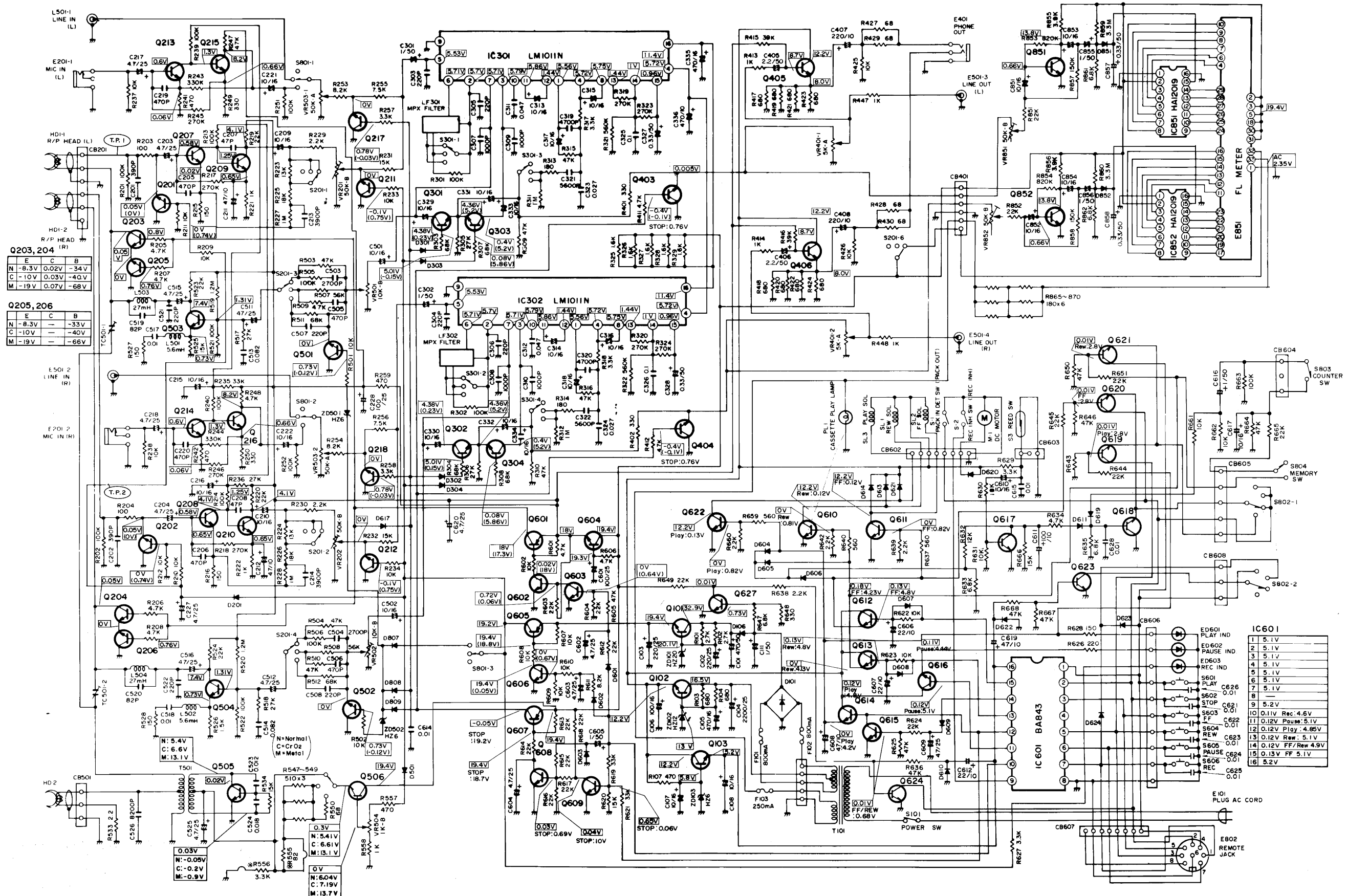
SYMBOL NO.	PART NO.	DESCRIPTION	Q'TY	NOTE
		(Miscellaneous)		
S101	40T45561G02	SW Power (SDLIP)	1	
S804	40T45478F02	SW Push	1	
S802	40T42063F02	SW Rotary	1	
S-3	40T47104F01	SW Reed	1	A
S601-606	40T44505F01	SW KHG	6	
E101	28T43812P02	Plug AC Cord	1	
T101	25T47454F01	Trans. Power	1	
E802	9T42751F01	Din Jack 8P	1	
VR401	18T47459F01	Res., Variable 5Kax2	1	
VR504	18T43904U01	VR. Rotary Bias	1	
Q506	48T40832F03	Tr., 2SC1318NC-R	1	
D501	48S134816	Diode SI IS1555	1	
R557	6S40150T57	Res., F.C. 470	1	
C621-626	8T40154T61	Cap., Cer. 10000P	6	A
ED601,602	48T401818T02	LED. T. Run GL-2PG1	2	
ED603	48T401818T01	LED. T. Run GL-2AR1	1	
PL1	65C42544U04	Lamp, Pilot 14V-50mA	1	
		(Assy., Packing)		
101	56C44350F01	Tray, Packing	4	
102	56C44544F36	Carton, Packing	1	
103	56B40230G23	Sack, Poly	1	
104	1V46200F96	Assy., Pamph.	1	
-1	28T44352F01	Plug, Output Cord	1	
-2	56B40230G21	Sack, Poly	1	
-3	68R47438F01	Owners, Manu. K-116EN	1	
		(LABEL)		
	54B42124G03	Label Model No.	1	
	54A44257U01	Label Voltage	1	

SPECIFICATIONS

Heads	2 heads Record/Playback Head (HexaLam Head) x 1 Erase Head (Double - Gap Ferrite) x 1
Wow & Flutter:	no more than 0.06% (W.R.M.S.)
Signal-to-Noise Ratio:	better than 57dB (DOLBY NR OFF) metal tape better than 62dB (DOLBY NR ON) metal tape better than 57dB (DOLBY NR OFF) CrO ₂ tape better than 62dB (DOLBY NR ON) CrO ₂ tape better than 55dB (DOLBY NR OFF) LH tape better than 60dB (DOLBY NR ON) LH tape
Frequency Response:	20 - 20,000 Hz (metal tape) 20 - 18,000 Hz (CrO ₂ tape) 20 - 16,000 Hz (LH tape)
Overall Distortion:	no more than 0.7% (LH tape, 1kHz, 0dB)
Input Sensitivity:	line in; 100mV mic.; 0.3mV (recommended microphone impedance: 600~10k ohms)
Output Level:	line out; 500mV headphone; 1mW (8 ohms load)
Power Consumption:	25W
Dimensions:	438(W) x 275(D) x 109(H) mm (17.5" x 11" x 4.4") (including Legs, Rear Protrusions & Knobs)
Weight:	Net 5.0 kgs (11.0 lbs.) Gross 6.0 kgs (13.2 lbs.)

Specifications and appearance design subject to change without notice.

* NOISE REDUCTION CIRCUIT MADE UNDER LICENCE FROM DOLBY LABORATORIES. THE WORD "DOLBY" AND THE DOUBLE-D SYMBOL ARE THE TRADE MARKS OF DOLBY LABORATORIES.



Q203, 204 (R)

E	C	B
N	-8.3V	0.02V -34V
C	-10V	0.03V -40V
M	-19V	0.07V -68V

Q205, 206

E	C	B
N	-8.3V	-33V
C	-10V	-40V
M	-19V	-66V

Q504

N	5.4V
C	6.6V
M	13.1V

Q505

N	5.41V
C	6.61V
M	13.1V

Q506

N	6.04V
C	7.19V
M	13.7V

Q602

N	19.2V
C	19.4V
M	19.8V

Q603

N	19.4V
C	19.8V
M	20.2V

Q604

N	19.4V
C	19.8V
M	20.2V

Q605

N	19.4V
C	19.8V
M	20.2V

Q606

N	19.4V
C	19.8V
M	20.2V

Q607

N	19.4V
C	19.8V
M	20.2V

Q608

N	19.4V
C	19.8V
M	20.2V

Q609

N	19.4V
C	19.8V
M	20.2V

Q610

N	19.4V
C	19.8V
M	20.2V

Q611

N	19.4V
C	19.8V
M	20.2V

Q612

N	19.4V
C	19.8V
M	20.2V

Q613

N	19.4V
C	19.8V
M	20.2V

Q614

N	19.4V
C	19.8V
M	20.2V

Q615

N	19.4V
C	19.8V
M	20.2V

Q616

N	19.4V
C	19.8V
M	20.2V

Q617

N	19.4V
C	19.8V
M	20.2V

Q618

N	19.4V
C	19.8V
M	20.2V

IC601

1	5.1V
2	5.1V
3	5.1V
4	5.1V
5	5.1V
6	5.1V
7	5.1V
8	5.1V
9	5.2V
10	0.1V Rec: 4.6V
11	0.12V Pause: 5.1V
12	0.12V Play: 4.85V
13	0.12V Rew: 5.1V
14	0.12V FF/Rew: 4.9V
15	0.13V FF: 5.1V
16	5.2V

LUX CORPORATION, JAPAN

1-1, 1-CHOME, SHINSENRI-NISHIMACHI, TOYONAKA-SHI, OSAKA
PHONES: 06-834-0004 CABLE: LUXMAN TOYONAKA TELEX: J63694